



THE ARCADIA

2022 MBA Parade of Homes Model

Single Story Plan | 4 Bedrooms | 4 Baths
4,320 Total Sq. Ft.

VICTORY
HOMES OF WISCONSIN, INC.

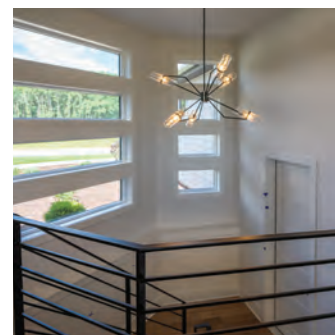
**DISTINCTIVE DESIGNS.
SUPERIOR CRAFTSMANSHIP.**

Model home as depicted may not represent base home plan. Please see a sales representative for details.

The Arcadia is a modern dream home! The arched entry opens to an open foyer with a dramatic angled staircase leading to the finished lower level. The main living area features an open, light-filled layout. The great room showcases a stunning fireplace with Quartz surround, built-in custom cabinetry, and a stained ceiling beam. Double glass Andersen® sliding doors lead to a spacious deck. In the kitchen, a sizeable island takes center stage. Custom Dura Supreme Cabinetry® is finished in a complimentary mixture of painted white and textured foil Oak, creating a modern, minimalistic feel. Luxury finishes, like a full height Quartz backsplash, pot filler and professional grade appliances, paired with ample storage, make this kitchen just as attractive as it is hard working. An amazing walk-through butler's pantry provides ample storage and prep space, complete with a microwave, beverage fridge, ice maker, and water bottle filler. Located beyond the kitchen's pocket office are two bedrooms and a shared bath. The family command center houses the laundry facilities, a boot bench with lockers, walk-in closet, drop zone, broom closet and convenient side-entry.

On the opposite side of the home, the private owner's suite is the perfect oasis. You'll want to move right in when you see the magnificent wet bath, featuring a free-standing soaker tub, wall-mounted dual shower heads and Kohler® hydrosair shower column.

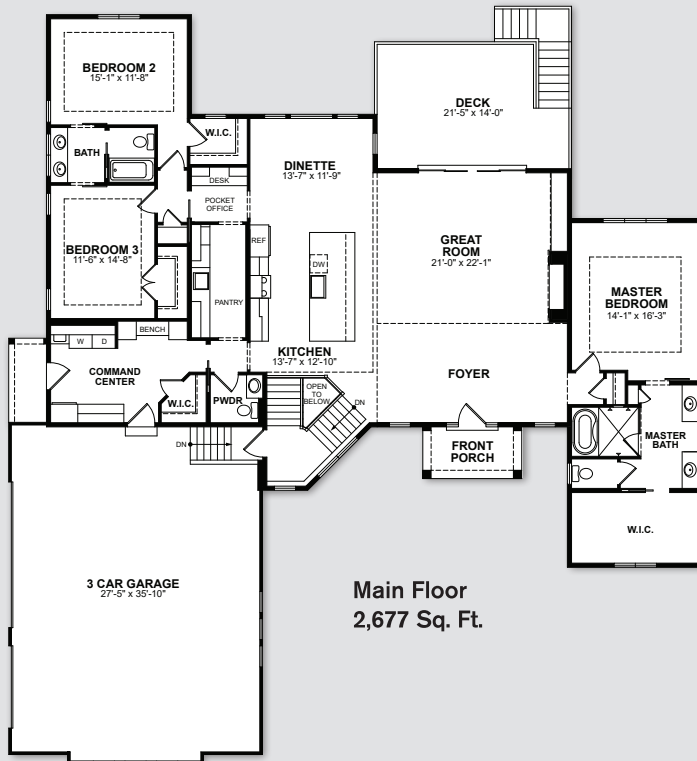
In the finished lower level, a large rec room and wet bar provide a great space for fun and entertaining. The home's fourth bedroom, a full bath, and media room complete the space. See the Arcadia floorplans on reverse.





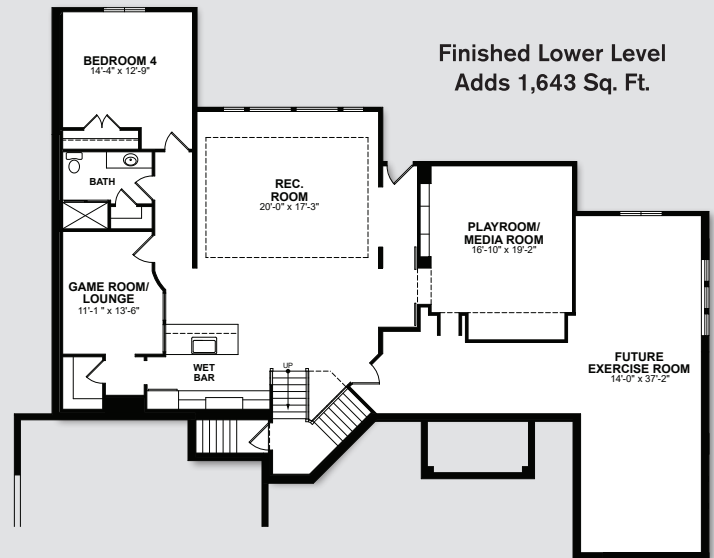
The Arcadia 2022 MBA Parade Model

- 2,677 Sq. Ft.
- 3 bedrooms, 2.5 baths
- 3-car side-entry garage
- Kitchen with large island, snack bar seating, pocket office and walk-through pantry
- Family command center
- 1,643 Sq. Ft. finished lower level with rec room, wet bar with walk-in pantry, lounge, media room, fourth bedroom, and 3/4 bath



Main Floor
2,677 Sq. Ft.

Base Price: _____
 Model Price: _____
 Model Price w/ Lower Level: _____
 Lot Price: _____
 Site Costs Est.: _____
 Total Build Cost: _____



Finished Lower Level
Adds 1,643 Sq. Ft.

Model home as depicted may not represent base home plan. Please see a sales representative for details.



Model Hours, August 1 - September 5: Saturdays, Sundays & Labor Day – 11am-5pm, Monday - Friday - 4pm-8pm

Model Hours, starting September 10: Saturdays & Sundays noon to 4pm, or by appointment. Closed holiday weekends.

Address: W278 N6112 Serenity Drive, Stone Ridge of Merton

Directions: I-94 to WI-16 W toward Pewaukee. Continue 3.2 mi. To exit 186 for County Rd KF. Turn right on County Rd KF/Ryan Rd. Left onto Lisbon Rd/Waukesha K. Continue straight onto Moraine Dr/Waukesha MD 0.6 mi. Turn left onto Ainsworth Rd to subdivision entrance on left (Serenity Dr) 0.7 mi.

FOLLOW US ON:   