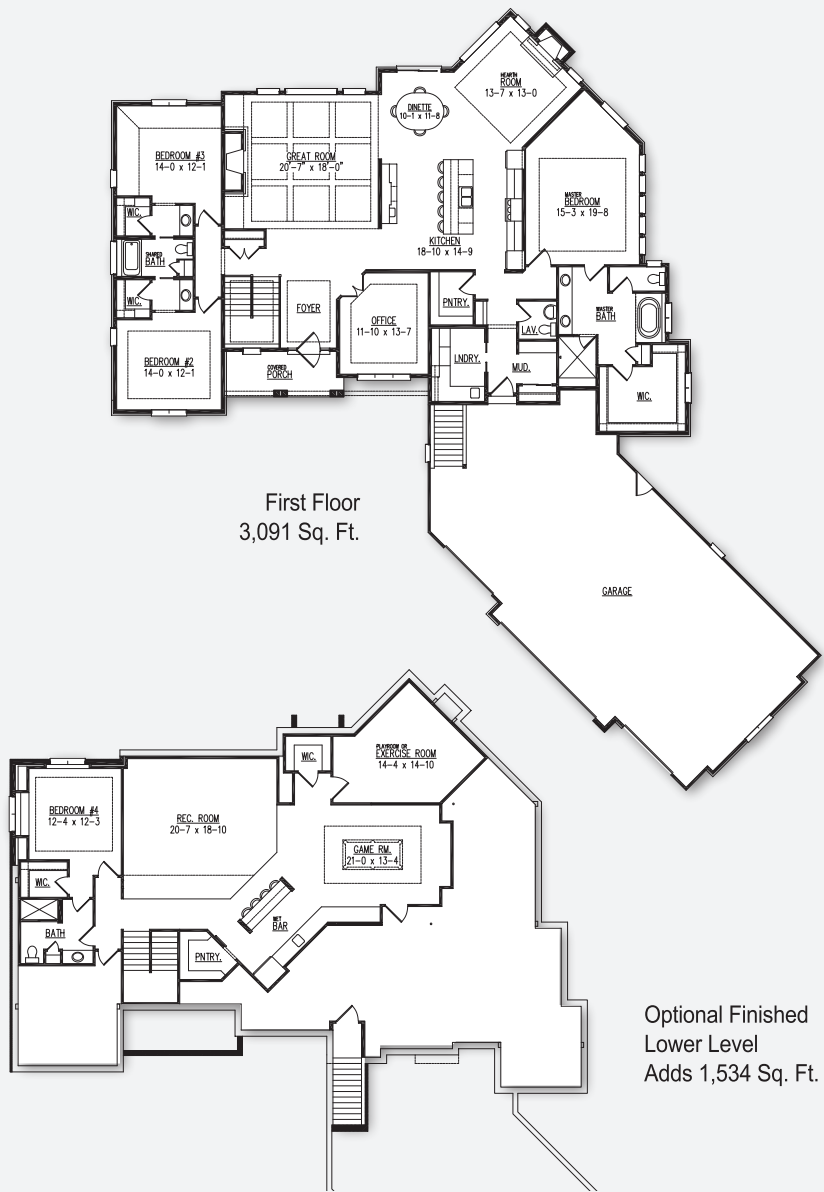




The Brooklyn Model



- POINTS OF INTEREST**
- 3,091 Sq. Ft.
 - 3 bedrooms
 - 2.5 bathrooms
 - Home office, luxury primary bath, hearth room
 - 1,534 Sq. Ft. Lower level adds rec room, wet bar with walk-in pantry, game room, playroom or exercise room, and fourth bedroom with bath

Model Hours:
Saturdays & Sundays, Noon to 4 pm,
or by appointment. Closed holiday weekends.!

10127 W. Farmdale Estates Court
Farmdale Estates Subdivision, Mequon

Directions: I-43 to Mequon Rd. (Hwy. 167).
West, approximately 5.8 miles, to N. Farmdale Rd.
South to community entrance on the left.

Model home as depicted may not represent base home plan. Please see a sales representative for details.

follow us on

