



The Brooklyn 2026 MBA Parade of Homes Model



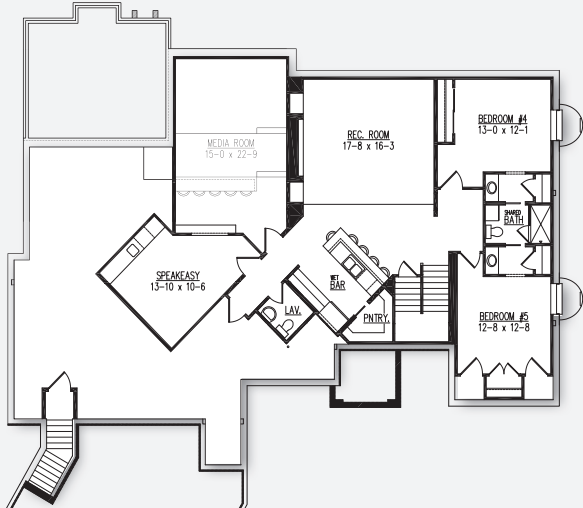
First Floor
3,061 Sq. Ft.



POINTS OF INTEREST

- 3,061 Sq. Ft.
- 3 bedrooms, 2 1/2 baths
- Kitchen with large island and walk-in pantry
- 3-Season room, home office
- 1,789 Sq. Ft. finished lower level adds rec room, wet bar with walk-in pantry, guest bath, media room and speakeasy, plus two additional bedrooms (5 total) and shared bath

Optional Finished Lower Level Adds 1,789 Sq. Ft.



Model Hours:
Coming Soon!

W185N5022 Emerald Hills Drive
QuietWood, Menomonee Falls

Directions: I-45, exit Silver Spring Drive. West on One Milwaukee Road to subdivision entrance. East on Quietwood Drive, then right onto Emerald Hills Drive, to model on the left (just past Woodfield Way).

Model home as depicted may not represent base home plan. Please see a sales representative for details.

