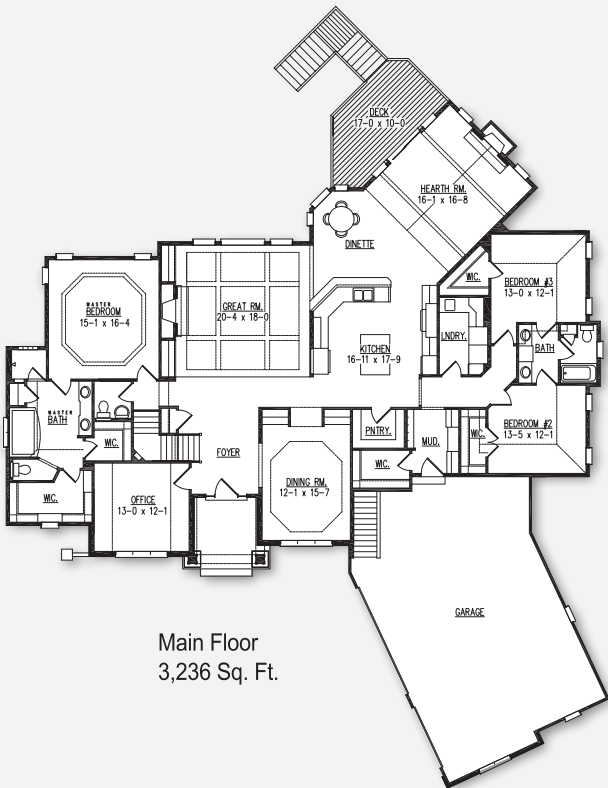


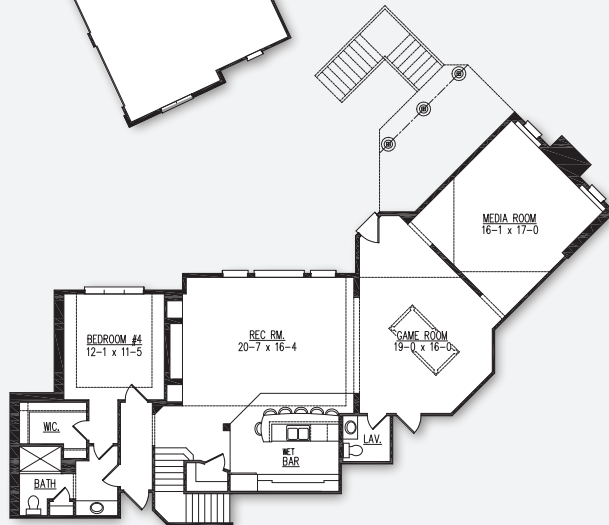


The Castle Rock B Model



Main Floor
3,236 Sq. Ft.

Optional Finished
Lower Level
Adds 1,444 Sq. Ft.



POINTS OF INTEREST

- 3,236 Sq. Ft.
- 3 bedrooms
- 2.5 bathrooms
- 3 car canted garage
- Formal dining room, home office and hearth room
- 1,444 Sq. Ft. finished lower level adds rec room, wet bar, game room, lavatory, media room, fourth bedroom, and full bath

Model Hours:
Saturday & Sunday, noon - 4pm, or by appointment. Closed holiday weekends.

21203 W. Catherine Court
Kohler Ridge, New Berlin

Directions: I-43 exit Racine Ave. (Hwy Y).
North to Lawnsdale Rd. West to subdivision entrance.
Left on Kohler Ridge Blvd. Right on Catherine Ct.
to model on left.



Model home as depicted may not represent base home plan. Please see a sales representative for details.

follow us on

