

Cosgrove Acres

VILLAGE OF RICHFIELD

About the Community

Cosgrove Acres is an exclusive residential subdivision nestled in the serene landscapes of Richfield, Wisconsin. Situated amidst rolling hills and lush greenery, Cosgrove Acres offers 23 expansive single-family lots, each spanning 1.25+ acres, providing ample space for your dream home.

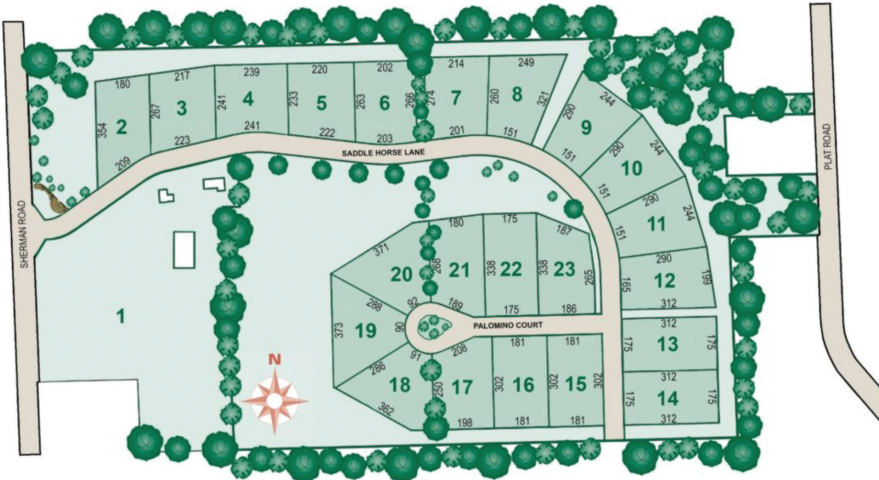
Convenience meets tranquility at Cosgrove Acres. Located just moments away from local amenities such as the beloved Peck and Bushel Organic Fruit Company, Holy Hill Basilica and National Shrine, charming restaurants, and the scenic Ice Age Trail, residents enjoy the perfect blend of rural seclusion and urban accessibility.

Whether you envision a rustic retreat or a modern oasis, Cosgrove Acres' spacious lots provide the canvas for your ideal home. Embrace the opportunity to customize your living space in a community designed for comfort and individuality.

Seize the opportunity to create your perfect home in Richfield's newest residential haven. Whether you're drawn to the peaceful ambiance, the spacious lots, or the prime location, Cosgrove Acres invites you to build your future in a community that values space, nature, and quality living.

Neighborhood Features

- Protective covenants
- 1.25+ acre lots
- Private well & septic required
- All utilities to lot line/right of way
- Outbuildings permitted
- Friess Lake Elementary School, Richfield Middle School & Hartford Union High School



Directions

I-41 N, exit 52 toward CR-Q/County Line Rd./I-41 ALT/US-45 ALT. Follow for .2 mi. Turn left onto County Line Rd (CR-Q W) toward I-41 ALT/US-45 ALT. Follow for 6.1 mi. Take the 2nd exit from roundabout onto County Rd. Q. Follow for 1 mi. Take the 1st exit from roundabout onto State Rd. 164 (WI-164 N). Follow for 1 mi. Turn left onto Monches Rd. Follow for 1.5 mi. Turn left onto Sherman Rd. Follow for .2 mi to subdivision entrance.

Information is deemed to be accurate and is subject to change without notice. Buyers are encouraged to review the recorded plat map and grading plans with their builder. Please call for current availability.



FOLLOW US ON:



allanbuilders.com 866-569-2500
victoryhomesofwisconsin.com 866-252-7100