

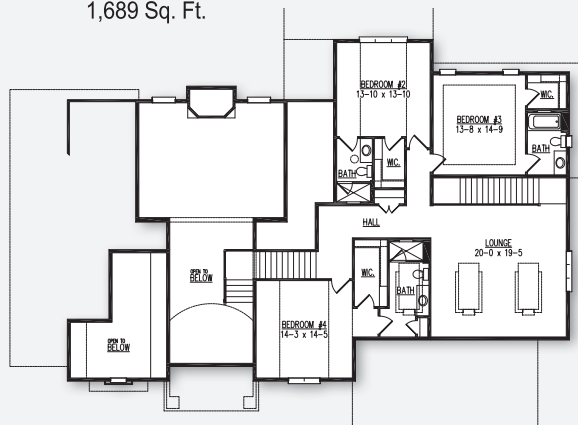
The Greenwood Model

VICTORY
HOMES OF WISCONSIN, INC.

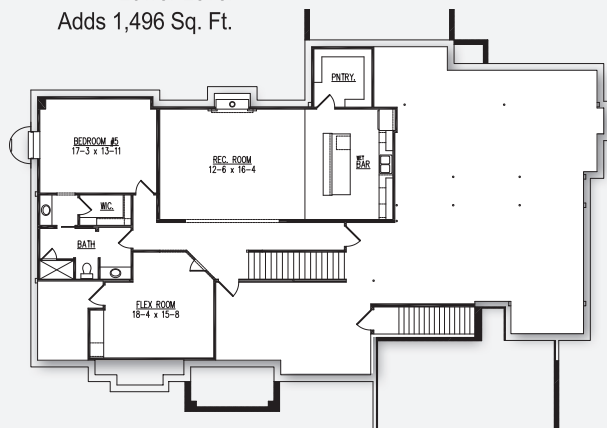
DISTINCTIVE DESIGNS.
SUPERIOR CRAFTSMANSHIP.



Second Floor
1,689 Sq. Ft.



Optional Finished
Lower Level
Adds 1,496 Sq. Ft.



POINTS OF INTEREST

- 5,211 Sq. Ft.
- 4 bedroom, 4.5 baths
- 4-car side entry garage
- Home office, 4-season room, covered porch, second floor lounge
- 1,496 Sq. Ft. finished lower level adds rec room, wet bar, walk-in pantry, flex room, fifth bedroom and 3/4 bath

Model Hours: Coming Soon!

Lot 11, Bark River Crossing, Summit

Directions: I-94, exit 283 onto N. Sawyer Rd. South on N. Sawyer Rd. to Genesee Lake Rd. West onto Genesee Lake Rd. South onto Meadow Park Ln. at subdivision entrance.

Model home as depicted may not represent base home plan. Please see a sales representative for details.

follow us on

