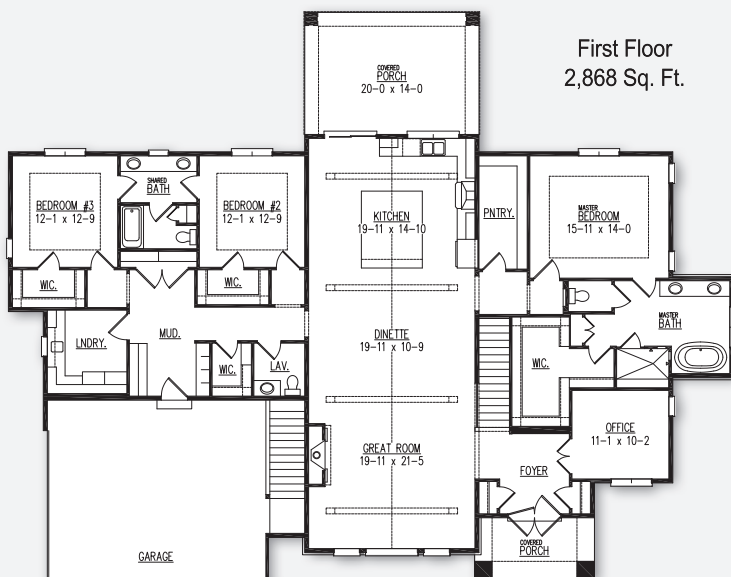


The Hazel Model



POINTS OF INTEREST

- 2,868 Sq. Ft.
- 3 bedroom, 2.5 baths
- 3-car side-entry garage
- Home office and covered porch
- 1,459 Sq. Ft. finished lower level adds rec room, game room wet bar, home gym, and fourth bedroom with 3/4 bath

Model Hours: Coming soon!

7544 Blue Cedar Drive
Glacier's Trail Subdivision, Middleton 53593

Directions: From Mineral Point Rd., head to Pioneer Rd. Go south to Valley View Rd. Take Valley View Rd. west until it turns into Mound View. Take Mound View south to Saracen Way. Take Saracen Way east to Blue Cedar Dr. to model.

Finished Lower
Level Adds
1,459 Sq. Ft.

