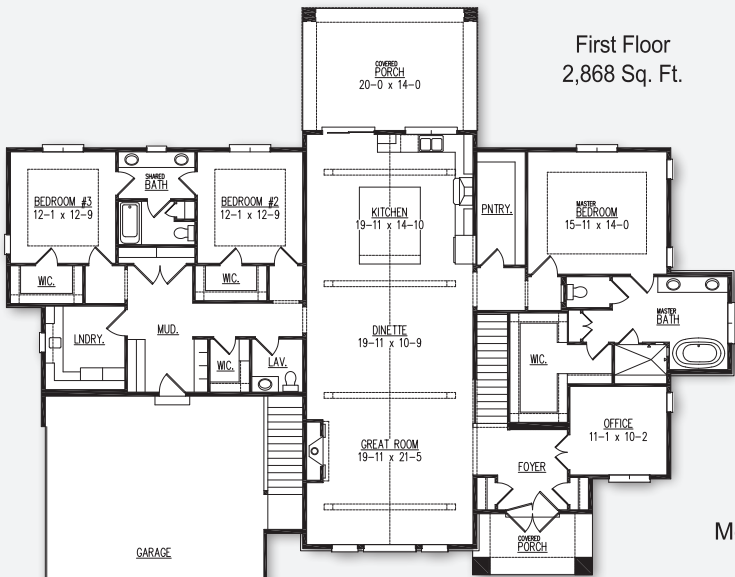




The Hazel 2026 MABA Parade of Homes Model



First Floor
2,868 Sq. Ft.

- POINTS OF INTEREST**
- 2,868 Sq. Ft.
 - 3 bedroom, 2.5 baths
 - 3-car side-entry garage
 - Home office and covered porch
 - 1,459 Sq. Ft. finished lower level adds rec room, game room wet bar, home gym, and fourth bedroom with 3/4 bath

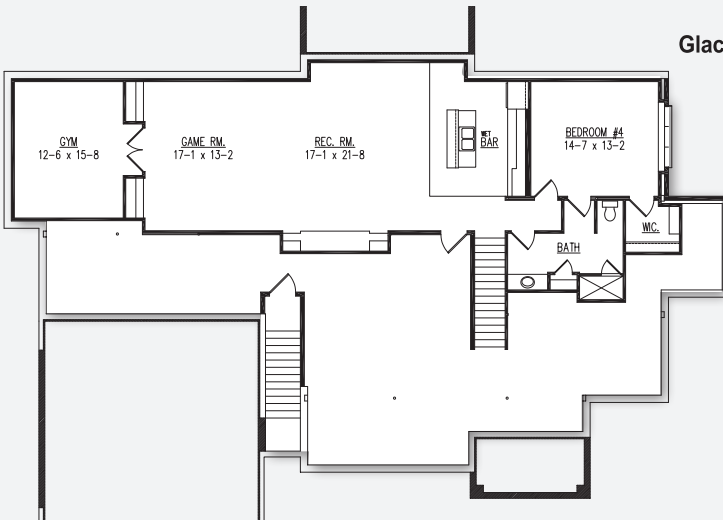
Parade of Homes Model Hours, June 19-28, 2026:
Monday through Friday: 4 - 8 pm, Saturday & Sunday: 11 am - 5 pm.

Model Hours, Starting July 11: Saturdays & Sundays noon to 4 pm, or by appointment. Closed holiday weekends.

**7544 Blue Cedar Drive
Glacier's Trail Subdivision, Middleton 53593**

Directions: From Mineral Point Rd., head to Pioneer Rd. Go south to Valley View Rd. Take Valley View Rd. west until it turns into Mound View. Take Mound View south to Saracen Way. Take Saracen Way east to Blue Cedar Dr. to model.

Finished Lower Level Adds
1,459 Sq. Ft.



Model home as depicted may not represent base home plan. Please see a sales representative for details.

follow us on

