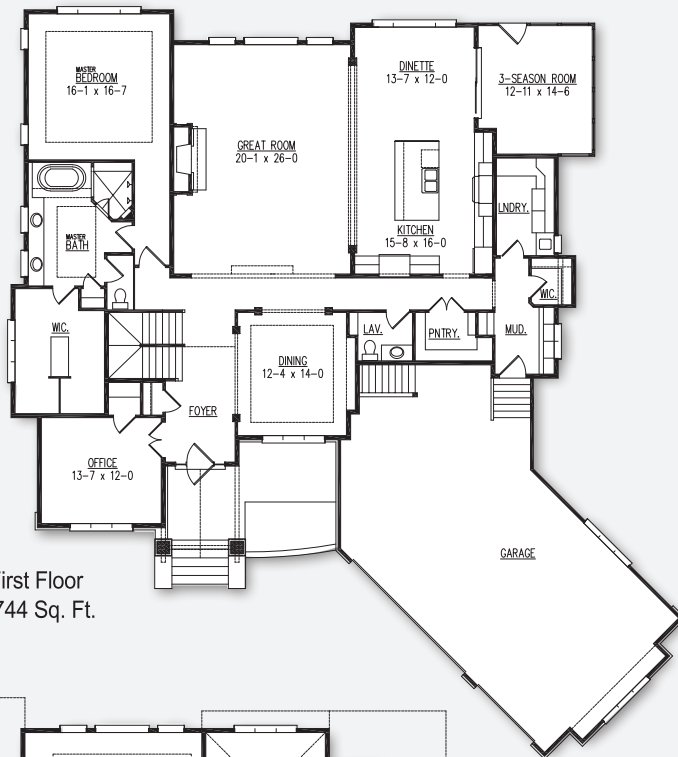




# The Maple MABA Fall Parade of Homes Model



follow us on



First Floor  
2,744 Sq. Ft.

### POINTS OF INTEREST

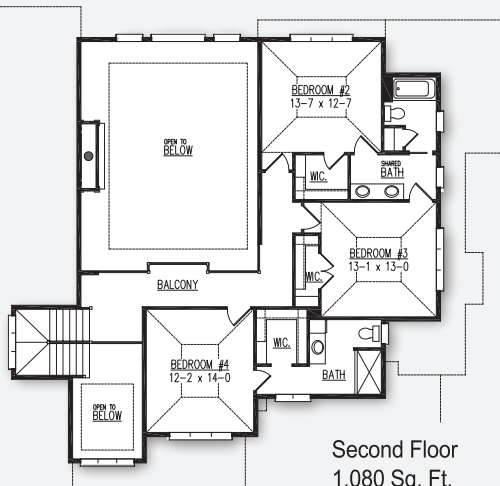
- 3,824 Sq. Ft.
- 4 bedrooms, 3.5 bathrooms
- 3-car canted garage
- Home office, formal dining room, 3-season room
- 1,564 Sq. Ft. Finished lower level adds rec room, game room, wet bar, playroom, fifth bedroom and full bath

**Parade of Homes Model Hours, October 13-15 & 20-22:**  
Fridays - 3 - 7pm, Saturdays & Sundays - 11am - 6pm

**Model Hours, Starting October 28:** Saturdays & Sundays  
noon to 4pm, or by appointment. Closed holiday weekends.

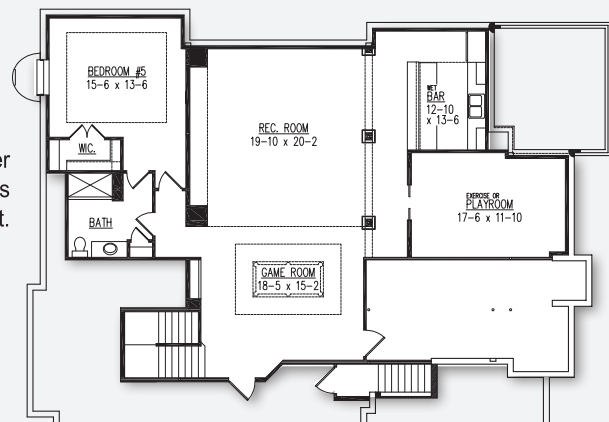
**4935 Home Stretch Drive,  
Prairie Estates at Bishops Bay, Westport**

**Directions:** Hwy 113 to Hwy M. Take M to Bishops Bay Pkwy. Left on Burning Prairie Dr. Left on Home Stretch Dr. to model on the right.



Second Floor  
1,080 Sq. Ft.

Finished Lower  
Level Adds  
1,564 Sq. Ft.



Model home as depicted may not represent base home plan. Please see a sales representative for details.