



# The Melrose Model



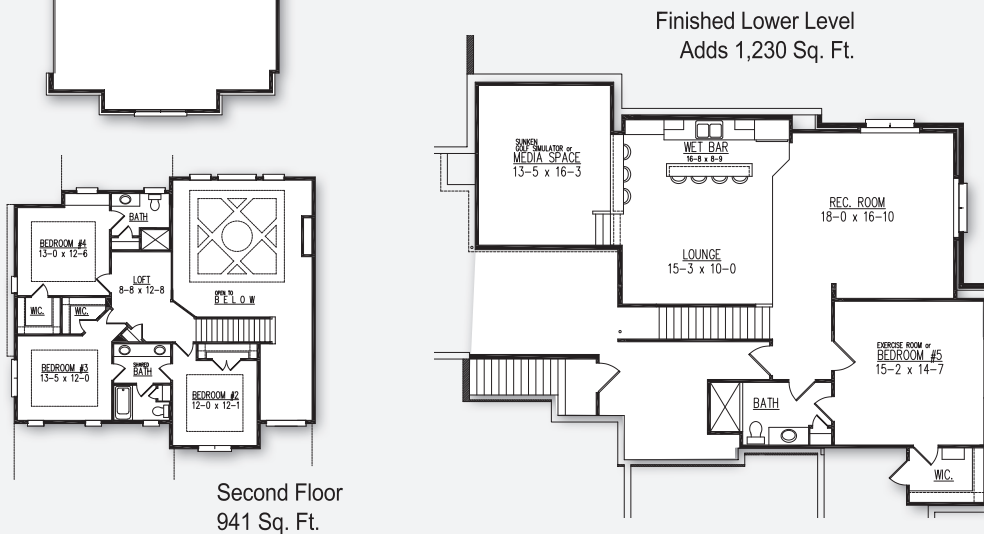
First Floor  
2,121 Sq. Ft.

- POINTS OF INTEREST**
- 3,062 Sq. Ft.
  - 4 bedrooms
  - 3.5 bathrooms
  - 3 car garage
  - Kitchen with large island, snack bar seating & walk-in pantry
  - Home office, covered porch and second floor loft
  - 1,230 Sq. Ft. finished lower level with rec room, wet bar, lounge, sunken golf simulator, fifth bedroom with walk-in closet, and full bath

**Model Hours:** Saturdays & Sundays, noon to 4 pm, or by appointment. Closed holiday weekends.

**7885 Dragonfly Court, Twin Rock Subdivision, Verona**

**Directions:** IUS-151S/US-18W to Spring Rose Rd. South to Prairie Vista Dr. (subdivision on left .6 mi). Left to lot 7 on corner of Prairie Vista & Twin Rock Rd. (GPS: 42.978971, -89.600723)



Finished Lower Level  
Adds 1,230 Sq. Ft.

Second Floor  
941 Sq. Ft.



Model home as depicted may not represent base home plan. Please see a sales representative for details.

follow us on

