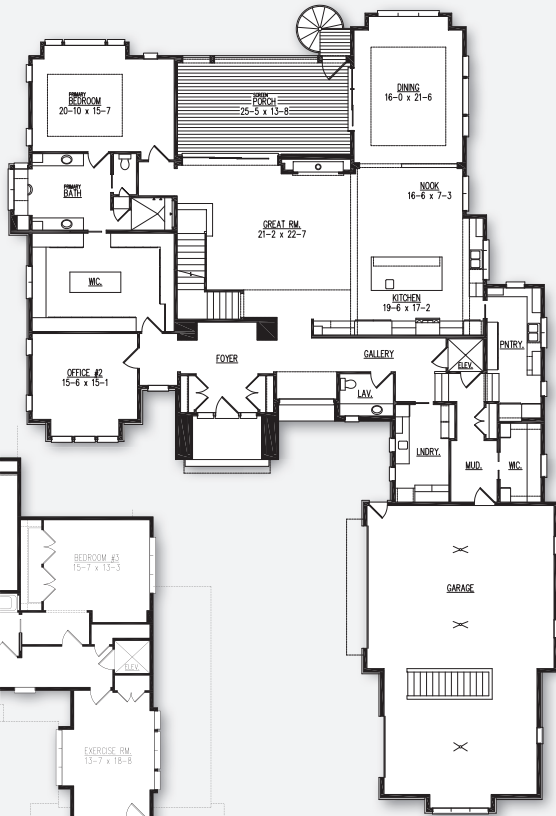




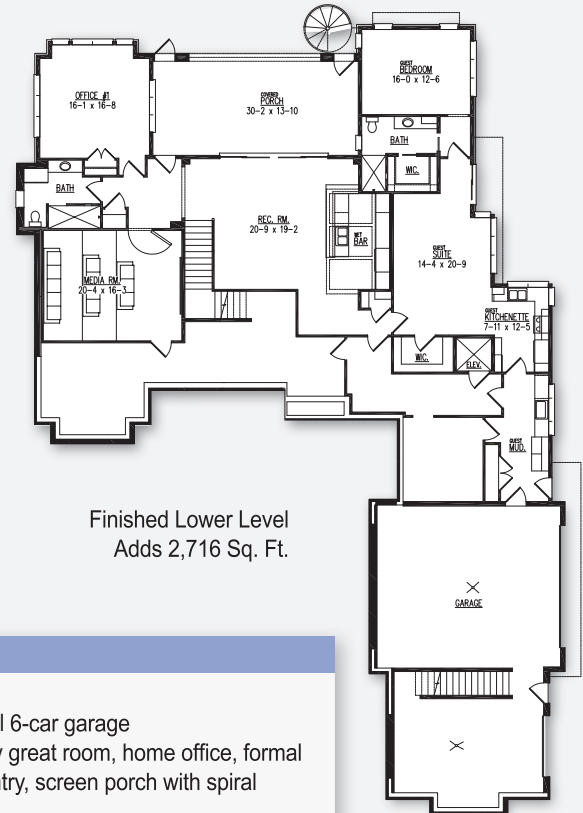
The Sequoia 2024 MABA Fall Parade of Homes Model



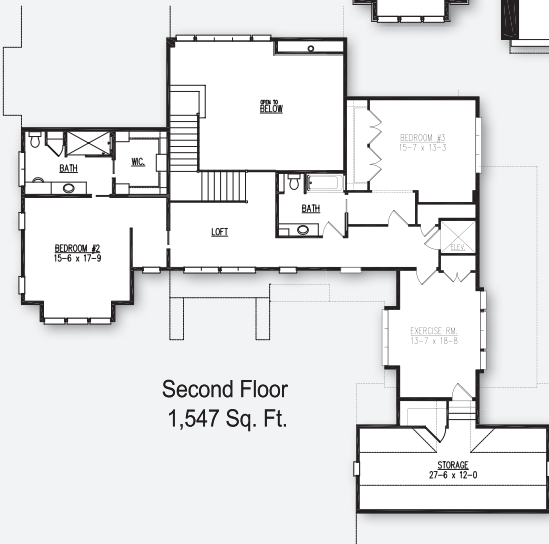
First Floor
3,532 Sq. Ft.



Finished Lower Level
Adds 2,716 Sq. Ft.



Second Floor
1,547 Sq. Ft.



POINTS OF INTEREST

- 5,079 Sq. Ft.
- 3 bedrooms, 3.5 bathrooms, multi-level 6-car garage
- Opulent first floor primary suite, 2-story great room, home office, formal dining room, walk-through butler's pantry, screen porch with spiral staircase, elevator
- Second floor features two bedrooms with full baths, loft, exercise room and flex room
- 2,595 Sq. Ft. Lower level adds rec room with wet bar, multi-level sunken media room, walk-out covered porch, the home's second home office, and 3/4 bath. There is also a private guest living area with garage access, mudroom with laundry, kitchenette, living room, and guest suite with curbless shower and walk-in closet.

Model Hours: Coming Fall 2024

**1436 Serenity Court,
Serenity Estates at Token Creek, Sun Prairie**

Directions: I-94 to North on 90 to North on 151 to West on 19 (Windsor St) to North on Highway C to right on Stonehaven Drive to left on St. Patrick Way to subdivision, then left on Serenity Ct. to model.



Model home as depicted may not represent base home plan. Please see a sales representative for details.

FOLLOW US ON:

