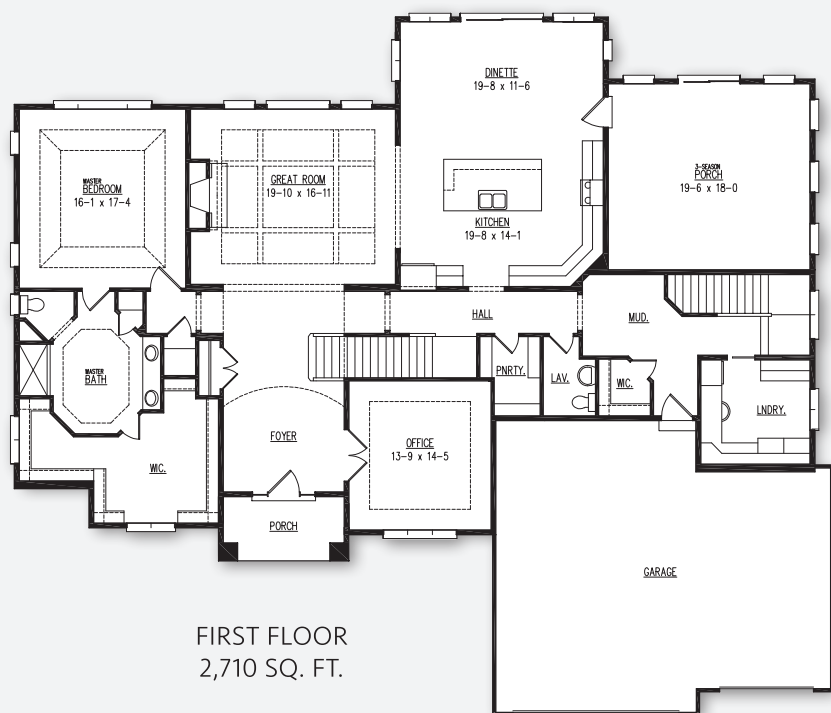


The Highland

VICTORY
HOMES OF WISCONSIN, INC.

DISTINCTIVE DESIGNS.
SUPERIOR CRAFTSMANSHIP.

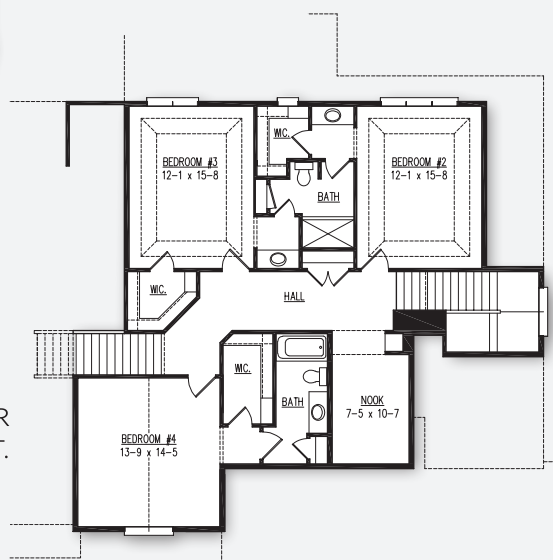


FIRST FLOOR
2,710 SQ. FT.

PLAN DETAILS

- 3,934 Square Feet
- Standard Plan - Overall Size: 79'-4" x 67'-7"
- Executive Plan - Overall Size: 77'-6" x 77'-4"
- 4 bedrooms 3.5 bathrooms
- Loft overlooking great room
- Home office, 3-season porch, second floor kids' nook

SECOND FLOOR
1,224 SQ. FT.



FOLLOW
US ON:

