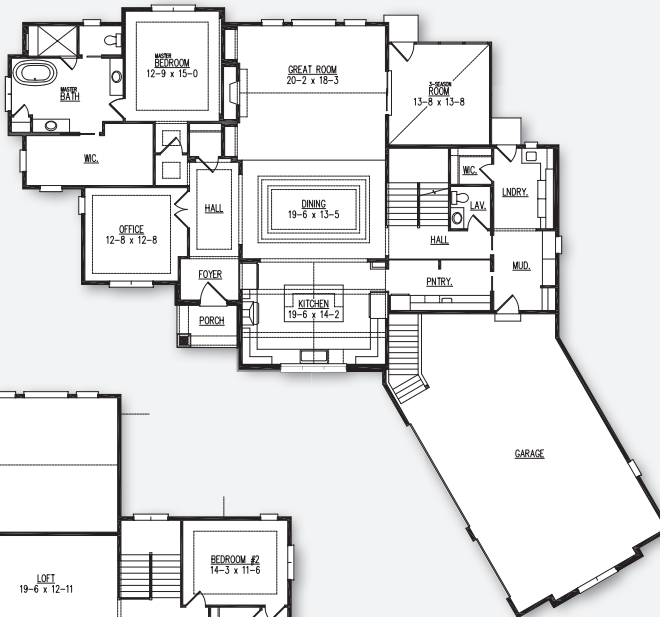


# The Montello Model



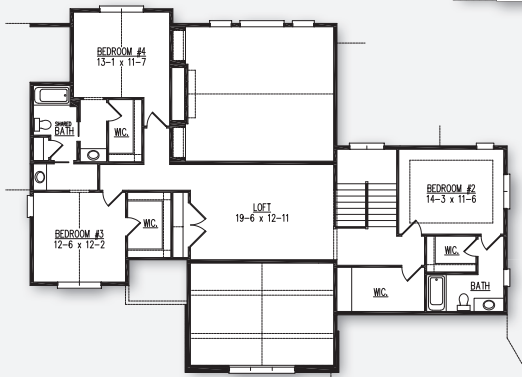
First Floor  
2,514 Sq. Ft.



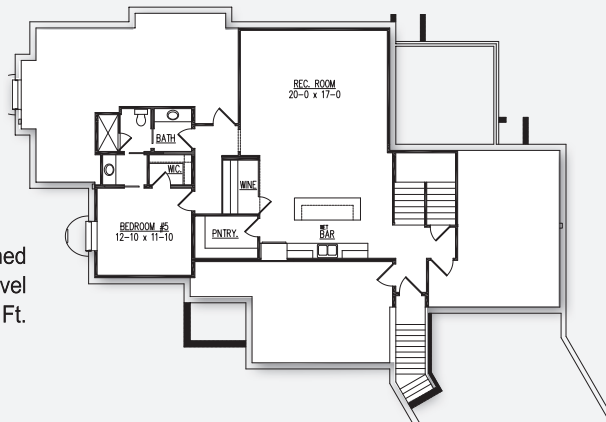
### POINTS OF INTEREST

- 3,926 Sq. Ft.
- 4 bedrooms
- 3.5 bathrooms
- 3 car canted garage
- Home office, 3-season room, second floor loft
- 1,092 Sq. Ft. finished lower level adds rec room, wet bar, wine storage room, and fifth bedroom with bath

Second Floor  
1,412 Sq. Ft.



Optional Finished  
Lower Level  
Adds 1,092 Sq. Ft.



**Model Hours:**  
Coming Soon!

**N69W18041 Haven Drive  
The Sanctuary at Good Hope  
Menomonee Falls**

**Directions:** located to the southwest of the intersection of Good Hope Road and Town Hall Road.

GPS: 43.143956, -88.134974

Model home as depicted may not represent base home plan. Please see a sales representative for details.

follow us on

