



About the Community

Discover an opportunity to build your dream home in The Oaks at Schmitt Farms, a thoughtfully planned residential subdivision in the heart of Richfield, Wisconsin. Rooted in local history, this land was once home to the Oliver J. Schmitt family farm, a place of hard work, tradition, and community—now transformed into a neighborhood where new memories will be made.

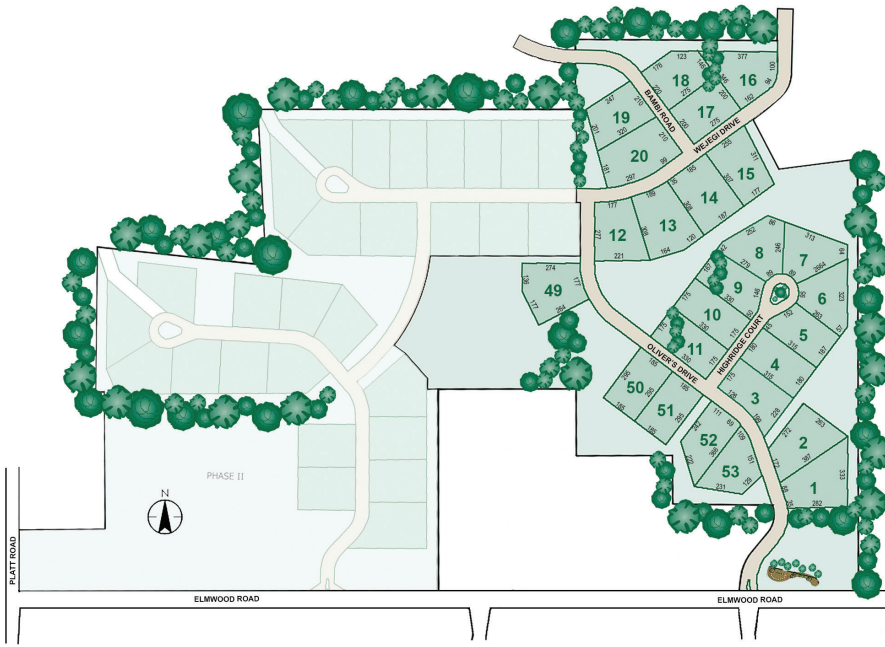
The Oaks at Schmitt Farms features 1.25+ acre homesites with rolling topography, offering space, privacy, and the potential for basement exposures. Phase 1 includes 25 lots, with a total of 53 planned upon completion. With curb and gutter improvements, plentiful open space, and the freedom to select the builder of your choice, this community is designed to provide both quality and flexibility.

Nestled in a peaceful rural setting, The Oaks at Schmitt Farms offers tranquility without sacrificing convenience. Just minutes away, residents can enjoy the natural beauty of Kettle Moraine State Forest, Richfield Historical Park, the iconic Holy Hill Basilica and National Shrine, the seasonal charm of Holy Hill Art Farm, and fresh, local produce from Peck & Bushel Organic Fruit Company. With nearby schools, amenities, and easy highway access, the community offers the perfect balance of country living with city convenience.

Neighborhood Features

Protective Covenants

- 1.25+ Acre home sites
- Private well and septic required
- All utilities to lot line/right of way
- Outbuilding permitted
- Friess Lake Elementary School, Richfield Middle School, Hartford Union High School



Directions

I-41, exit 57 toward 167 West/Holy Hill Rd. Left on Holy Hill Rd. to downtown Richfield. Follow .5 mi and take the 2nd exit at the roundabout. Continue 3.6 miles, and then take the 3rd exit in the roundabout to go south on Hwy. 164. Proceed 1 mile, then turn right/west onto Elmwood Rd. Right onto Oliver's Dr. at subdivision entrance.

Information is deemed to be accurate and is subject to change without notice. Buyers are encouraged to review the recorded plat map and grading plans with their builder. Please call for current availability.



FOLLOW US ON:



allanbuilders.com 866-569-2500
victoryhomesofwisconsin.com 866-252-7100