

THE PRESERVE AT
Harvest Ridge

TOWN OF LISBON

About the Community

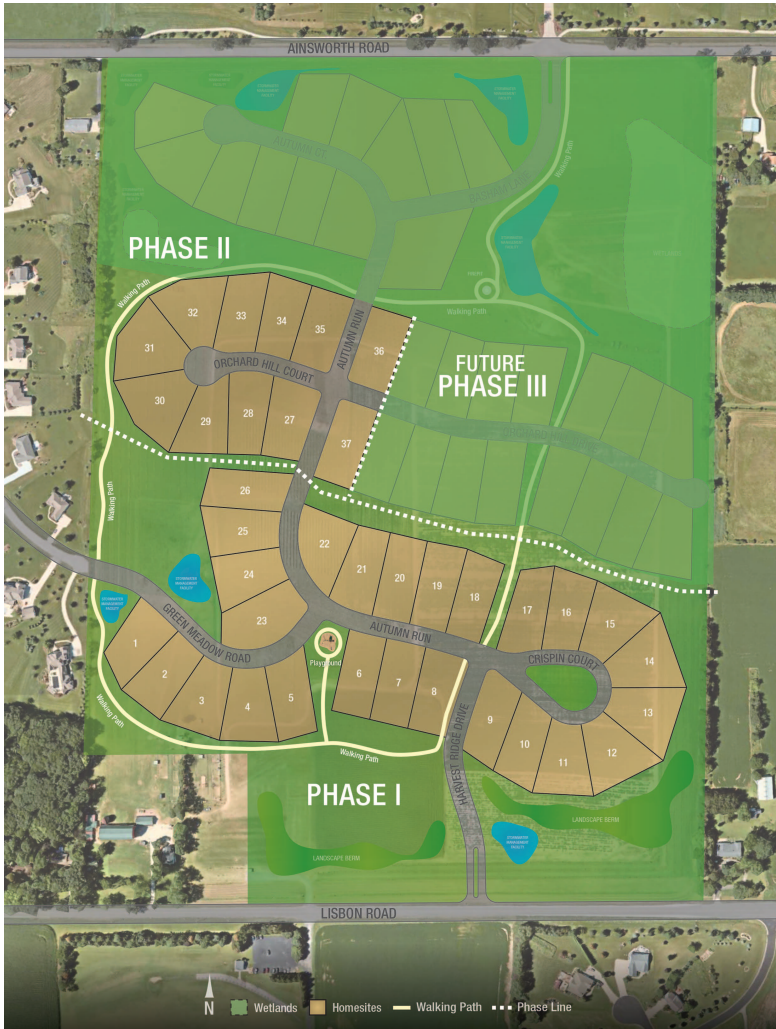
The Preserve at Harvest Ridge is conveniently located in The Town of Lisbon, in the north central part of Waukesha County. Proximity to State Highway 164 makes the 30-minute drive to Milwaukee very easy. The town has approximately 170 acres of parkland and six distinct parks. These parks have baseball fields, soccer fields, playgrounds, hiking and cross-country skiing trails, plus many sports leagues for both youths and adults. Within a short drive from Lisbon you'll find Ironwood Golf Course, Songbird Hills Golf Club, and Silver Spring Golf Club. The Preserve at Harvest Ridge offers 26 homesites in Phase. Several homesites have daylight or full exposures. The Preserve at Harvest Ridge in Lisbon is a great community for those looking to raise a family and build your new home. Please contact us for a site walk or to tour another location.

Neighborhood Features

- Arrowhead School District, Richmond Elementary
- Protective covenants
- Easy commute to Milwaukee or Madison
- Nearby access to parks, golfing, shopping and entertainment
- 2020 MBA Parade of Homes site

Directions

I-94 to Hwy.16. Take Hwy. 16 to County Road KF. Continue on County Rd. KF to Lisbon Rd. and take a slight left turn. Take a second slight left turn on Lisbon Rd. and continue to the community entrance on the right.



Information is deemed to be accurate and is subject to change without notice. Buyers are encouraged to review the recorded plat map and grading plans with their builder. Please call for current availability.



allanbuilders.com 866-569-2500
 victoryhomesofwisconsin.com 866-252-7100