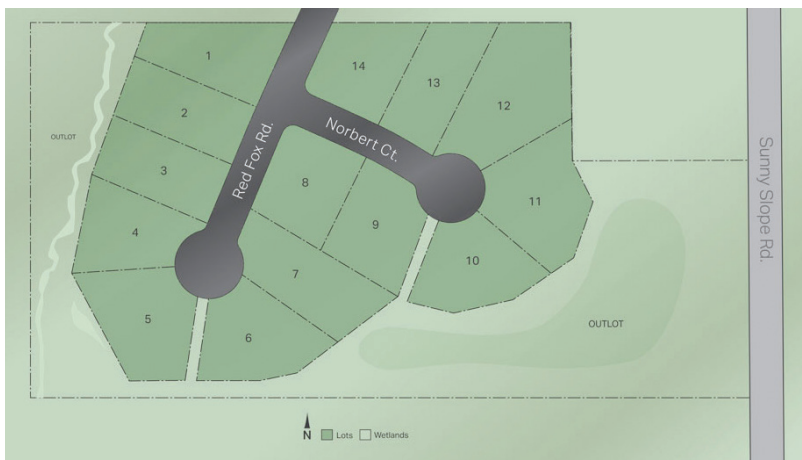


THEOFILA ■ ESTATES

NEW BERLIN



About the Community

Introducing Theofila Estates New Berlin. This private, 14-lot, dual cul-de-sac development offers full and partial exposure opportunities, many with wooded backdrops. This premier location borders Valley View Park to the south and is mere minutes from modern conveniences and I-43. Lots sizes range from 1/2 to 1 acre. There are very few if any remaining developable parcels in New Berlin. These lots will not last, reserve today!

Neighborhood Features

- Fourteen .5 acre - 1 acre homesites with exposure opportunities
- City water and sewer
- Many lots with wooded backdrops
- New Berlin School District
- Protective covenants

Directions

Hwy. 43. to S Moorland Rd. Take S. Moorland Rd. to W. Grange Ave. East on W. Grange Ave. to Red Fox Rd. Continue South on Red Fox Rd. to the entrance to the neighborhood to the south.

Information is deemed to be accurate and is subject to change without notice. Buyers are encouraged to review the recorded plat map and grading plans with their builder. Please call for current availability.

