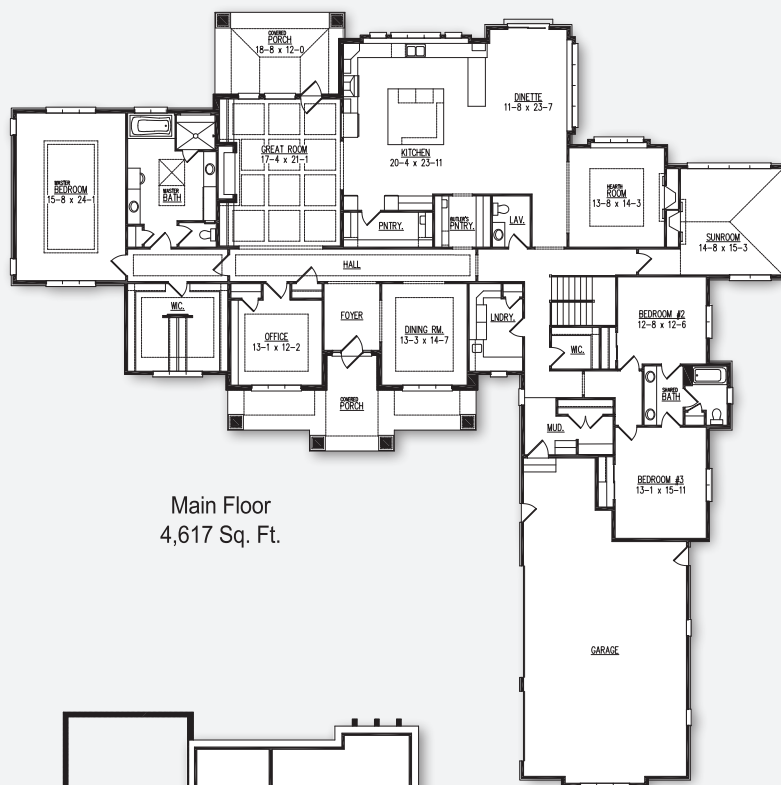




The Torrey Custom Home

VICTORY
HOMES OF WISCONSIN, INC.

DISTINCTIVE DESIGNS.
SUPERIOR CRAFTSMANSHIP.



POINTS OF INTEREST

- 4,617 Sq. Ft.
- 3 bedrooms, 2 1/2 baths
- Kitchen with over-sized island, walk-in pantry, Butler's pantry and dinette
- Rear covered porch, home office, formal dining room, hearth room and sunroom
- Deluxe primary suite with spa-like bath and over-sized walk-in closet
- 3,167 Sq. Ft. finished lower level adds rec room and lounge with serving area, play room, full bath, exercise room, and fourth bedroom

Model Hours:

Saturdays & Sundays, noon to 4 pm,
or by appointment. Closed holiday weekends.

3501 W. Torrey Drive

Torrey Drive Subdivision, Mequon

Directions: I-43, exit Port Washington Rd.

North to W. Dinges Bay Rd. West to
N. Gazebo Hill Parkway E. North to Turnberry Dr.
Right onto Turnberry Dr., then North onto
N. Torrey Dr. to model.

Finished Lower Level
Adds 3,167 Sq. Ft.

follow us on



Model home as depicted may not represent base home plan. Please see a sales representative for details.