



## About the Homesites

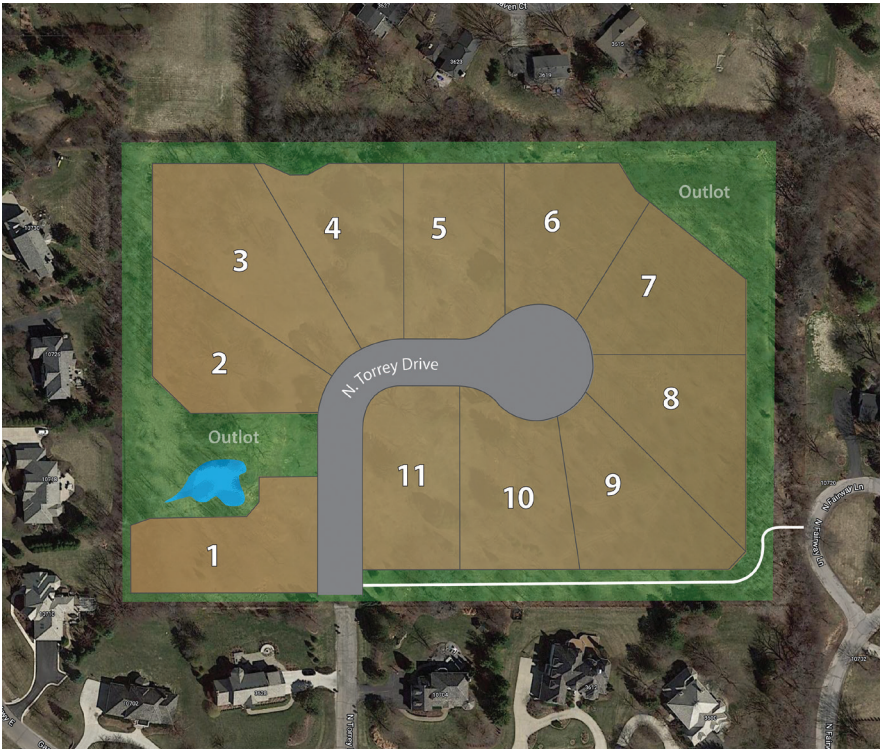
Torrey Drive is one of Mequon's newest luxury communities. Located just fifteen minutes north of Milwaukee, and just south of Mequon Road, this location offers easy freeway access, and convenient nearby retail in both Mequon and Grafton.

## Neighborhood Features

- Eleven Exclusive .5+ Acre Homesites
- Municipal Sewer and Water
- Protective Covenants
- Walking Path
- Mequon-Theisville School District
- Nearby access to parks, golf, shopping and entertainment

## Directions

North on N. River Road. East on Donges Bay Road. First road on the left (Gazebo Hill Parkway) to Turnberry Dr. Turnberry Dr. to N. Torrey Dr. to entrance of subdivision.



*Information is deemed to be accurate and is subject to change without notice. Buyers are encouraged to review the recorded plat map and grading plans with their builder. Please call for current availability.*



FOLLOW US ON:



allanbuilders.com 866-569-2500  
victoryhomesofwisconsin.com 866-252-7100