

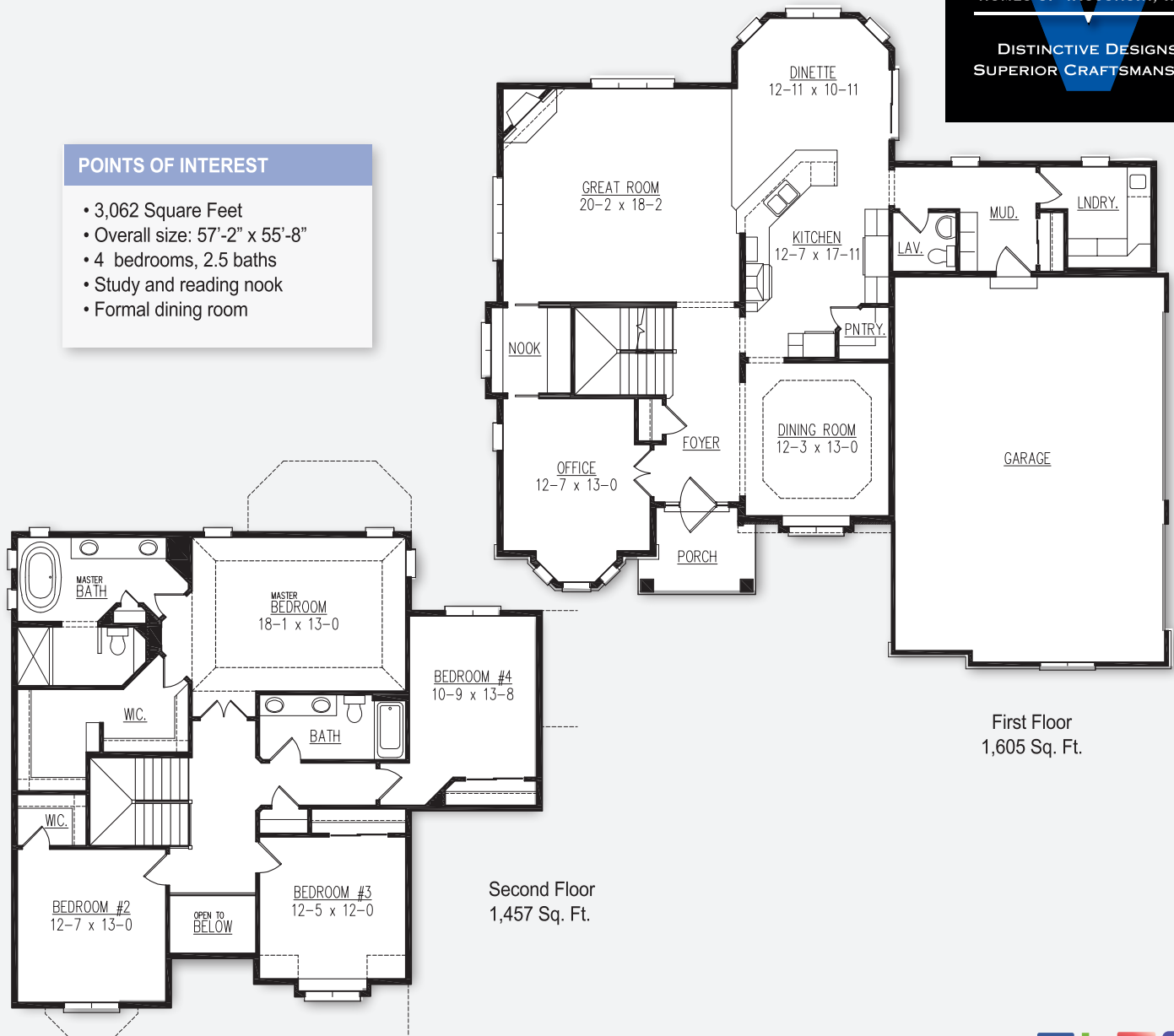
The Delavan

VICTORY
HOMES OF WISCONSIN, INC.

DISTINCTIVE DESIGNS.
SUPERIOR CRAFTSMANSHIP.

POINTS OF INTEREST

- 3,062 Square Feet
- Overall size: 57'-2" x 55'-8"
- 4 bedrooms, 2.5 baths
- Study and reading nook
- Formal dining room



Model home as depicted may not represent base home plan. Please see a sales representative for details.

FOLLOW
US ON:

