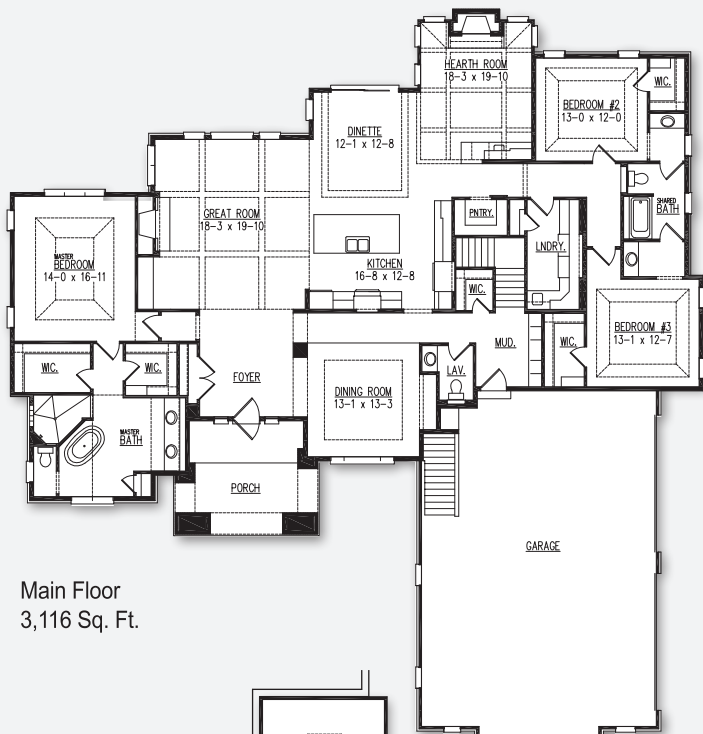




# The Linden Model



Main Floor  
3,116 Sq. Ft.

### POINTS OF INTEREST

- 3,116 Sq. Ft.
- 3 bedrooms, 2.5 baths
- 3 car garage
- Kitchen with island seating and walk-in pantry
- Formal dining room, hearth room
- Master suite with dual walk-in closets, walk-in tile shower and whirlpool tub
- 1,322 Sq. Ft. finished lower level with game room, wet bar, rec room, exercise room, and fourth bedroom with full bath and walk-in closet

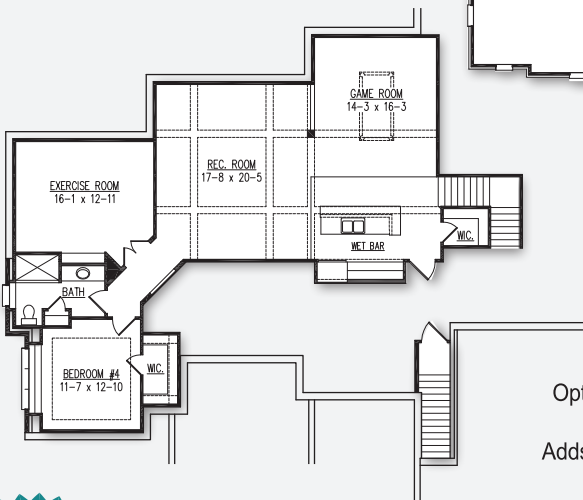
**Model Hours:**

Saturday & Sunday, noon - 4pm, or by appointment. Closed holiday weekends.

**11215 N. Ashbury Woods Drive  
Ashbury Woods Subdivision, Mequon**

**Directions:**

I-41 exit 48 onto WI-145. Keep right onto N 124th St. Continue 2.2 miles as the road turns into Wausaukee Rd. After 2 miles, turn right onto Mequon Rd. Turn left after .6 mi. onto Ashbury Woods Dr to model.



Optional Finished  
Lower Level  
Adds 1,322 Sq. Ft.



Model home as depicted may not represent base home plan. Please see a sales representative for details.

follow us on

