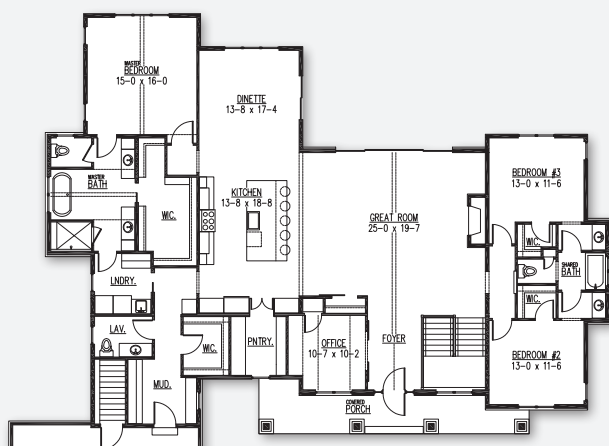




The Verona 2019 MABA Parade of Homes Model

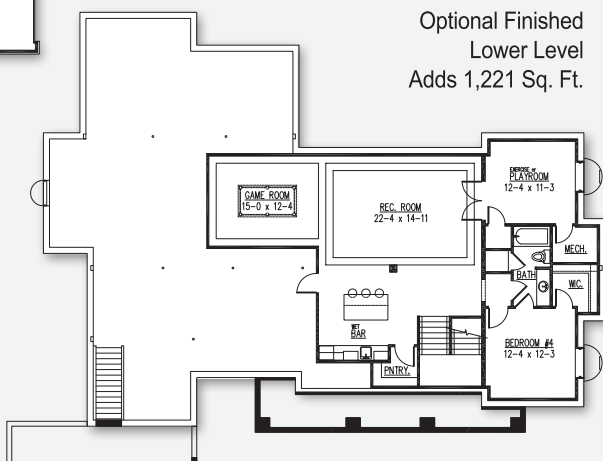
VICTORY
HOMES OF WISCONSIN, INC.

DISTINCTIVE DESIGNS.
SUPERIOR CRAFTSMANSHIP.



Main Floor
2,964 Sq. Ft.

Optional Finished
Lower Level
Adds 1,221 Sq. Ft.



POINTS OF INTEREST

- 2,964 Sq. Ft.
- 3 bedrooms, 2.5 baths
- 3 car courtyard garage
- Kitchen with island seating and walk-in pantry
- Home office
- 1,221 Sq. Ft. finished lower level with rec room room, wet bar with pantry, game room, 4th bedroom with walk-in closet and full bath, and playroom/exercise room

Model Hours, June 8-23:

Wednesday - Friday, 4:00 pm - 8:00 pm;
Saturday - Sunday, 11:00 am - 5:00 pm

Model Hours, starting June 29:

Saturday & Sunday, noon - 4pm, or by appointment. Closed holiday weekends.

2412 Kilarney Way, Kilkenney Farms, Waunakee

Directions from the East side of Madison: Take I-90/94 to Hwy 19/Waunakee (exit 131); turn left. Go to Hwy Q; turn left at the roundabout. Go to second stop light at Peaceful Valley Pkwy; turn left. Go to Water Wheel Dr; turn left. Go to Freshford Dr; turn right. The Parade entrance is on the corner of Freshford Drive and Kilarney Way.

Directions from the West side of Madison: Take Hwy 12 (Beltline) west to Hwy 19/Waunakee; turn right. Go to Hwy Q; turn right at roundabout. Go to second stop light at Peaceful Valley Pkwy; turn left. Go to Water Wheel Dr; turn left. Go to Freshford Dr; turn right. The Parade entrance is on the corner of Freshford Dr and Kilarney Way.



MADISON AREA
BUILDERS
ASSOCIATION

Model home as depicted may not represent base home plan. Please see a sales representative for details.

follow us on

